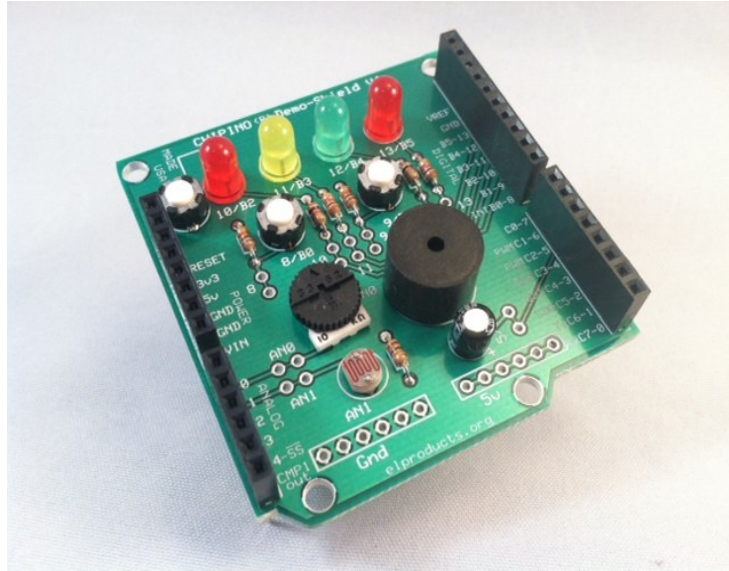


CHIPINO Demo-Shield

Assembly Instructions

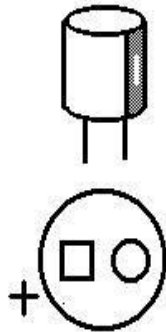


Parts List

- 4 – 1k 1/8 w
- 3 – 10k 1/8 w
- 2 – 5mm LED Red
- 1 – 5mm LED Yellow
- 1 – 5mm LED Green
- 1 – 10uf 16v Electrolytic Capacitor (Jameco.com 94212)
- 1 – Potentiometer (Jameco.com 1967441)
- 1 – CDS Photo Resistor (Jameco.com 202420)
- 3 – Momentary Switch (Jameco.com 199726)
- 1 – Piezo Speaker (Jameco.com 138740)
- 1 – 6 pin SIP header (Sparkfun.com PRT-09280)
- 2 – 8 pin SIP header (Sparkfun.com PRT-09279)
- 1 – 10 pin SIP header (Sparkfun.com PRT-11376)
- 1 – CHIPINO Demo-Shield Circuit Board

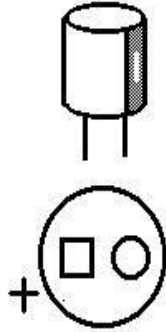
Assembly Instructions

1. Bend the leads and insert a 1k resistor in all locations marked with 1k. Solder and clip off the excess leads. There will be 4 locations.
2. Bend the leads and insert a 10k resistor in all locations marked with 10k. Solder and clip off the excess leads. There will be 3 locations.
3. Insert C2 (10uf) in place and make sure the positive side lines up with the + sign on the board. Solder and clip off the excess leads.



4. Insert Red LED into 10/B2 and 13/B5 locations. Make sure the flat mark on the LED lines up with the silkscreen on the board. Solder and clip off the excess leads.
5. Insert Yellow LED into 11/B3 location. Make sure the flat mark on the LED lines up with the silkscreen on the board. Solder and clip off the excess leads.
6. Insert Green LED into 12/B4 location. Make sure the flat mark on the LED lines up with the silkscreen on the board. Solder and clip off the excess leads.
7. Insert momentary switch in Reset, SW1 and SW2 locations. They can insert in either direction. Solder and clip off the excess leads.
8. Insert the CDS Photoresistor in spot marker CDS. It can be inserted in either direction. Solder and clip off the excess leads.
9. Insert Potentiometer in place at the location marked pot. Solder and clip off excess leads.

10. Insert the Piezo Speaker in place. Make sure the long lead marked + lines up with the + mark on the board. Solder and clip off the excess leads.



11. Insert the 6 pin header at the Analog rail. Solder in place. Make sure they align straight. DO NOT CLIP OFF LEADS!!!
12. Insert the 8 pin headers at the Power rail and the lower Digital rail. Solder in place. Make sure they align straight. DO NOT CLIP OFF LEADS!!!
13. Insert the 10 pin header at the upper Digital rail. Solder in place. Make sure they align straight. DO NOT CLIP OFF LEADS!!!

Congratulations. You have completed your Chipino Demo-Shield.

